

GN 113.7 | Quick release pins

Stainless steel



- 1
- 2
- 3
- 4
- 5
- 6
- 7
- 8
- 9
- 10
- 11
- 12
- 13
- 14
- 15
- 16
- 17
- 18

PIN AND PUSH BUTTON

AISI 303 stainless steel.

BALLS

AISI 420C stainless steel.

SPRING

Stainless steel.

TWO-WING HANDLE

Glass-fibre reinforced polyamide based (PA) technopolymer, black colour, provided with holes for security ring.

WORKING TEMPERATURE

From -30°C to +80°C.

FEATURES AND APPLICATIONS

GN 113.7 ball lock pins are generally used for quick fixation of components or parts to be machined, in particular for elements which need to be removed and reset continuously.

ACCESSORIES ON REQUEST

To optimise the use of these ball lock pins, have been designed:

- ball chains GN 111 (see page 611);
- retaining cables GN 111.2 (see page 612);
- spiral retaining cables GN 111.4 (see page 613).

SPECIAL EXECUTIONS ON REQUEST

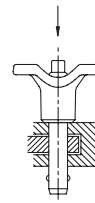
Other dimensions.

INSTRUCTIONS OF USE

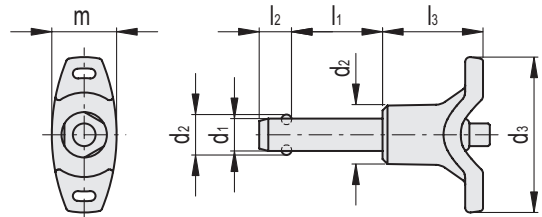
By pressing the push button the two balls are freed by exerting a radial retaining action which allows the pin to be engaged or disengaged.



Application example



Conversion Table	
1 mm = 0,039 inch	
d1	
mm	inch
5	0.20
6	0.24
8	0.31
10	0.39
12	0.47
16	0.63



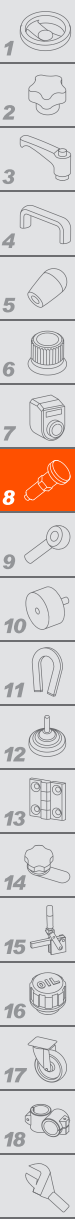
Code	Description	d1 ^{-0.04 -0.08}	d2	d3	d4	l1 ^{+0.6}	l2 ^{±0.2}	l3	m	Mounting hole H11	Double sided shearing force [KN]	⚖️
GN.38951	GN 113.7-5-10	5	5.5	40	13.5	10	6	25	15.5	5	14	15
GN.38952	GN 113.7-5-15	5	5.5	40	13.5	15	6	25	15.5	5	14	16
GN.38953	GN 113.7-5-20	5	5.5	40	13.5	20	6	25	15.5	5	14	16
GN.38954	GN 113.7-5-25	5	5.5	40	13.5	25	6	25	15.5	5	14	17
GN.38955	GN 113.7-5-30	5	5.5	40	13.5	30	6	25	15.5	5	14	18
GN.77801	GN 113.7-5-35	5	5.5	40	13.5	35	6	25	15.5	5	14	18
GN.77802	GN 113.7-5-40	5	5.5	40	13.5	40	6	25	15.5	5	14	18
GN.77803	GN 113.7-5-45	5	5.5	40	13.5	45	6	25	15.5	5	14	18
GN.77804	GN 113.7-5-50	5	5.5	40	13.5	50	6	25	15.5	5	14	18
GN.77805	GN 113.7-5-60	5	5.5	40	13.5	60	6	25	15.5	5	14	18
GN.77806	GN 113.7-5-70	5	5.5	40	13.5	70	6	25	15.5	5	14	18
GN.77807	GN 113.7-5-80	5	5.5	40	13.5	80	6	25	15.5	5	14	18
GN.38956	GN 113.7-6-10	6	7	40	13.5	10	7.1	25	15.5	6	21	15
GN.38957	GN 113.7-6-15	6	7	40	13.5	15	7.1	25	15.5	6	21	15
GN.38958	GN 113.7-6-20	6	7	40	13.5	20	7.1	25	15.5	6	21	20
GN.38959	GN 113.7-6-25	6	7	40	13.5	25	7.1	25	15.5	6	21	20
GN.38960	GN 113.7-6-30	6	7	40	13.5	30	7.1	25	15.5	6	21	20
GN.77811	GN 113.7-6-35	6	7	40	13.5	35	7.1	25	15.5	6	21	20
GN.38961	GN 113.7-6-40	6	7	40	13.5	40	7.1	25	15.5	6	21	25
GN.77812	GN 113.7-6-45	6	7	40	13.5	45	7.1	25	15.5	6	21	20
GN.77813	GN 113.7-6-50	6	7	40	13.5	50	7.1	25	15.5	6	21	20
GN.77814	GN 113.7-6-60	6	7	40	13.5	60	7.1	25	15.5	6	21	20
GN.77815	GN 113.7-6-70	6	7	40	13.5	70	7.1	25	15.5	6	21	20
GN.77816	GN 113.7-6-80	6	7	40	13.5	80	7.1	25	15.5	6	21	20

Indexing and positioning elements

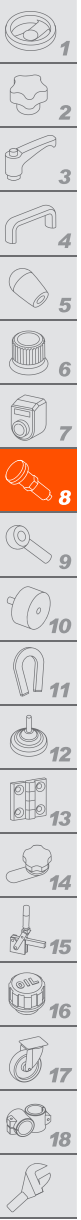
Conversion Table	
1 mm = 0.039 inch	
d1	
mm	inch
5	0.20
6	0.24
8	0.31
10	0.39
12	0.47

INOX STAINLESS STEEL METRIC

Code	Description	d1-0.04 -0.08	d2	d3	d4	l1+0.6	l2±0.2	l3	m	Mounting hole H11	Double sided shearing force [KN]	⚖️
GN.77821	GN 113.7-8-10	8	9.5	48	18	10	8.2	31	20.5	8	38	30
GN.77822	GN 113.7-8-15	8	9.5	48	18	15	8.2	31	20.5	8	38	30
GN.38962	GN 113.7-8-20	8	9.5	48	18	20	8.2	31	20.5	8	38	30
GN.38963	GN 113.7-8-25	8	9.5	48	18	25	8.2	31	20.5	8	38	35
GN.38964	GN 113.7-8-30	8	9.5	48	18	30	8.2	31	20.5	8	38	40
GN.77823	GN 113.7-8-35	8	9.5	48	18	35	8.2	31	20.5	8	38	30
GN.38965	GN 113.7-8-40	8	9.5	48	18	40	8.2	31	20.5	8	38	50
GN.77824	GN 113.7-8-45	8	9.5	48	18	45	8.2	31	20.5	8	38	30
GN.38966	GN 113.7-8-50	8	9.5	48	18	50	8.2	31	20.5	8	38	100
GN.77825	GN 113.7-8-60	8	9.5	48	18	60	8.2	31	20.5	8	38	30
GN.77826	GN 113.7-8-70	8	9.5	48	18	70	8.2	31	20.5	8	38	30
GN.77827	GN 113.7-8-80	8	9.5	48	18	80	8.2	31	20.5	8	38	30
GN.77828	GN 113.7-8-90	8	9.5	48	18	90	8.2	31	20.5	8	38	30
GN.77829	GN 113.7-8-100	8	9.5	48	18	100	8.2	31	20.5	8	38	30
GN.77831	GN 113.7-10-15	10	12	48	18	15	9.6	31	20.5	10	60	40
GN.38967	GN 113.7-10-20	10	12	48	18	20	9.6	31	20.5	10	60	40
GN.38968	GN 113.7-10-25	10	12	48	18	25	9.6	31	20.5	10	60	40
GN.38969	GN 113.7-10-30	10	12	48	18	30	9.6	31	20.5	10	60	50
GN.77832	GN 113.7-10-35	10	12	48	18	35	9.6	31	20.5	10	60	40
GN.38970	GN 113.7-10-40	10	12	48	18	40	9.6	31	20.5	10	60	60
GN.77833	GN 113.7-10-45	10	12	48	18	45	9.6	31	20.5	10	60	40
GN.38971	GN 113.7-10-50	10	12	48	18	50	9.6	31	20.5	10	60	70
GN.77834	GN 113.7-10-60	10	12	48	18	60	9.6	31	20.5	10	60	40
GN.77835	GN 113.7-10-70	10	12	48	18	70	9.6	31	20.5	10	60	40
GN.77836	GN 113.7-10-80	10	12	48	18	80	9.6	31	20.5	10	60	40
GN.77837	GN 113.7-10-90	10	12	48	18	90	9.6	31	20.5	10	60	40
GN.77838	GN 113.7-10-100	10	12	48	18	100	9.6	31	20.5	10	60	40
GN.77839	GN 113.7-10-110	10	12	48	18	110	9.6	31	20.5	10	60	40
GN.77840	GN 113.7-10-120	10	12	48	18	120	9.6	31	20.5	10	60	40
GN.77851	GN 113.7-12-20	12	14.5	58	24	20	10.6	36.5	27.5	12	87	94
GN.38972	GN 113.7-12-25	12	14.5	58	24	25	10.6	36.5	27.5	12	87	94
GN.38973	GN 113.7-12-30	12	14.5	58	24	30	10.6	36.5	27.5	12	87	100
GN.77852	GN 113.7-12-35	12	14.5	58	24	35	10.6	36.5	27.5	12	87	94
GN.38974	GN 113.7-12-40	12	14.5	58	24	40	10.6	36.5	27.5	12	87	109
GN.77853	GN 113.7-12-45	12	14.5	58	24	45	10.6	36.5	27.5	12	87	94
GN.38975	GN 113.7-12-50	12	14.5	58	24	50	10.6	36.5	27.5	12	87	120
GN.38976	GN 113.7-12-60	12	14.5	58	24	60	10.6	36.5	27.5	12	87	120
GN.77854	GN 113.7-12-70	12	14.5	58	24	70	10.6	36.5	27.5	12	87	94
GN.77855	GN 113.7-12-80	12	14.5	58	24	80	10.6	36.5	27.5	12	87	94
GN.77856	GN 113.7-12-90	12	14.5	58	24	90	10.6	36.5	27.5	12	87	94
GN.77857	GN 113.7-12-100	12	14.5	58	24	100	10.6	36.5	27.5	12	87	94
GN.77858	GN 113.7-12-110	12	14.5	58	24	110	10.6	36.5	27.5	12	87	94
GN.77859	GN 113.7-12-120	12	14.5	58	24	120	10.6	36.5	27.5	12	87	94



Indexing and positioning elements



Indexing and positioning elements

Conversion Table	
1 mm = 0.039 inch	
d1	
mm	inch
5	0.20
6	0.24
8	0.31
10	0.39
12	0.47
16	0.63
20	0.78
25	0.98

INOX STAINLESS STEEL **METRIC**

Code	Description	d1 -0.04 -0.08	d2	d3	d4	l1 +0.6	l2 ±0.2	l3	m	Mounting hole H11	Double sided shearing force [KN]	⚖
GN.38977	GN 113.7-16-30	16	19	58	24	30	14	36.5	27.5	16	155	140
GN.77861	GN 113.7-16-35	16	19	58	24	35	14	36.5	27.5	16	155	140
GN.38978	GN 113.7-16-40	16	19	58	24	40	14	36.5	27.5	16	155	160
GN.77862	GN 113.7-16-45	16	19	58	24	45	14	36.5	27.5	16	155	140
GN.38979	GN 113.7-16-50	16	19	58	24	50	14	36.5	27.5	16	155	180
GN.38980	GN 113.7-16-60	16	19	58	24	60	14	36.5	27.5	16	155	180
GN.77863	GN 113.7-16-70	16	19	58	24	70	14	36.5	27.5	16	155	140
GN.77864	GN 113.7-16-80	16	19	58	24	80	14	36.5	27.5	16	155	140
GN.77865	GN 113.7-16-90	16	19	58	24	90	14	36.5	27.5	16	155	140
GN.77866	GN 113.7-16-100	16	19	58	24	100	14	36.5	27.5	16	155	140
GN.77867	GN 113.7-16-110	16	19	58	24	110	14	36.5	27.5	16	155	140
GN.77868	GN 113.7-16-120	16	19	58	24	120	14	36.5	27.5	16	155	140
GN.77869	GN 113.7-16-130	16	19	58	24	130	14	36.5	27.5	16	155	140
GN.77870	GN 113.7-16-140	16	19	58	24	140	14	36.5	27.5	16	155	140
GN.77871	GN 113.7-16-150	16	19	58	24	150	14	36.5	27.5	16	155	140
GN.77881	GN 113.7-20-50	20	25	80	34	50	20.5	46.5	38	16	155	140
GN.77882	GN 113.7-20-60	20	25	80	34	60	20.5	46.5	38	16	155	140
GN.77883	GN 113.7-20-70	20	25	80	34	70	20.5	46.5	38	16	155	140
GN.77884	GN 113.7-20-80	20	25	80	34	80	20.5	46.5	38	16	155	140
GN.77885	GN 113.7-20-90	20	25	80	34	90	20.5	46.5	38	16	155	140
GN.77886	GN 113.7-20-100	20	25	80	34	100	20.5	46.5	38	16	155	140
GN.77887	GN 113.7-20-110	20	25	80	34	110	20.5	46.5	38	16	155	140
GN.77888	GN 113.7-20-120	20	25	80	34	120	20.5	46.5	38	16	155	140
GN.77889	GN 113.7-20-130	20	25	80	34	130	20.5	46.5	38	16	155	140
GN.77890	GN 113.7-20-140	20	25	80	34	140	20.5	46.5	38	16	155	140
GN.77891	GN 113.7-20-150	20	25	80	34	150	20.5	46.5	38	16	155	140
GN.77901	GN 113.7-25-50	25	30.8	80	34	50	22	46.5	38	16	155	140
GN.77902	GN 113.7-25-60	25	30.8	80	34	60	22	46.5	38	16	155	140
GN.77903	GN 113.7-25-70	25	30.8	80	34	70	22	46.5	38	16	155	140
GN.77904	GN 113.7-25-80	25	30.8	80	34	80	22	46.5	38	16	155	140
GN.77905	GN 113.7-25-90	25	30.8	80	34	90	22	46.5	38	16	155	140
GN.77906	GN 113.7-25-100	25	30.8	80	34	100	22	46.5	38	16	155	140
GN.77907	GN 113.7-25-110	25	30.8	80	34	110	22	46.5	38	16	155	140
GN.77908	GN 113.7-25-120	25	30.8	80	34	120	22	46.5	38	16	155	140
GN.77909	GN 113.7-25-130	25	30.8	80	34	130	22	46.5	38	16	155	140
GN.77910	GN 113.7-25-140	25	30.8	80	34	140	22	46.5	38	16	155	140
GN.77911	GN 113.7-25-150	25	30.8	80	34	150	22	46.5	38	16	155	140